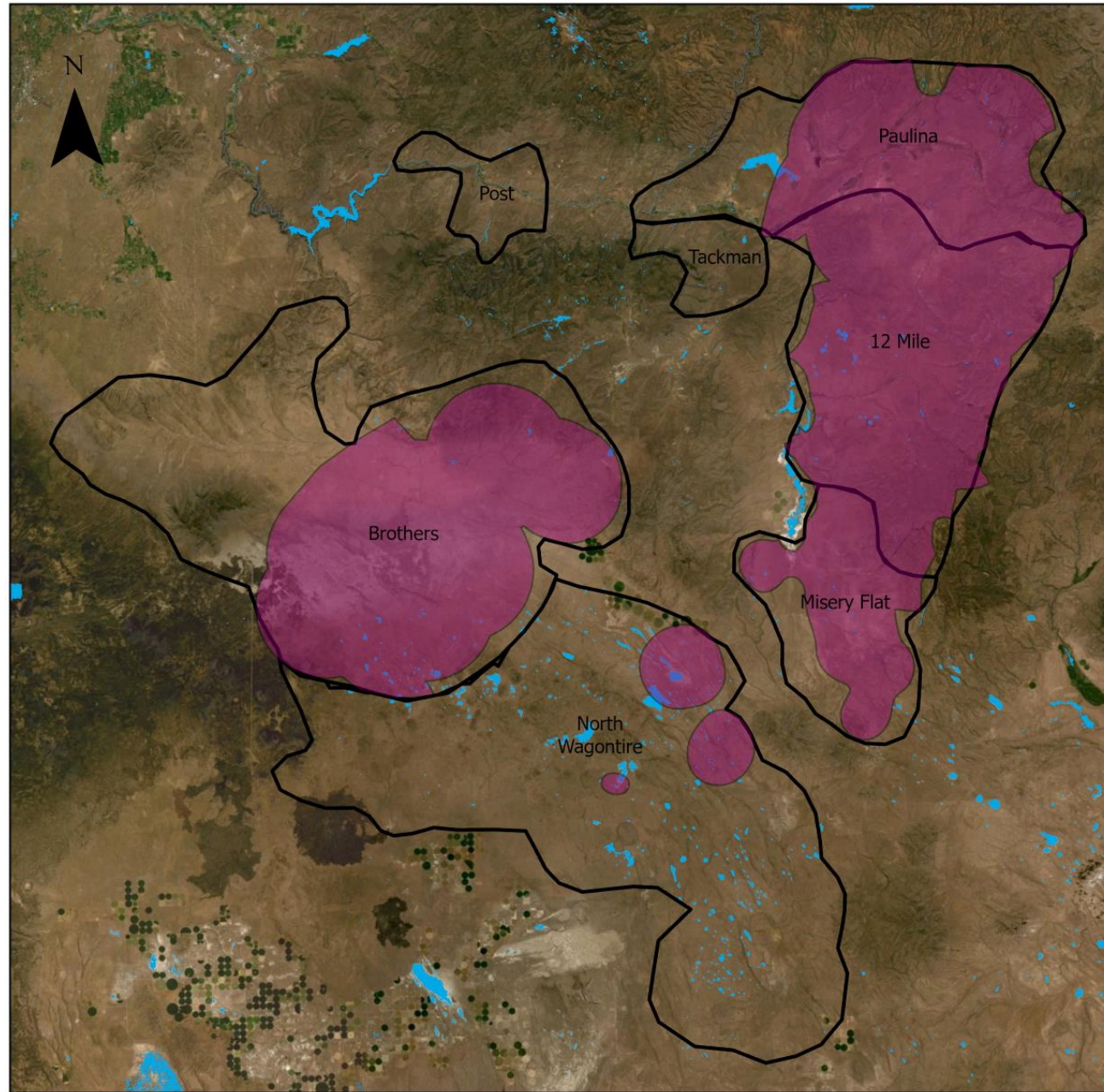
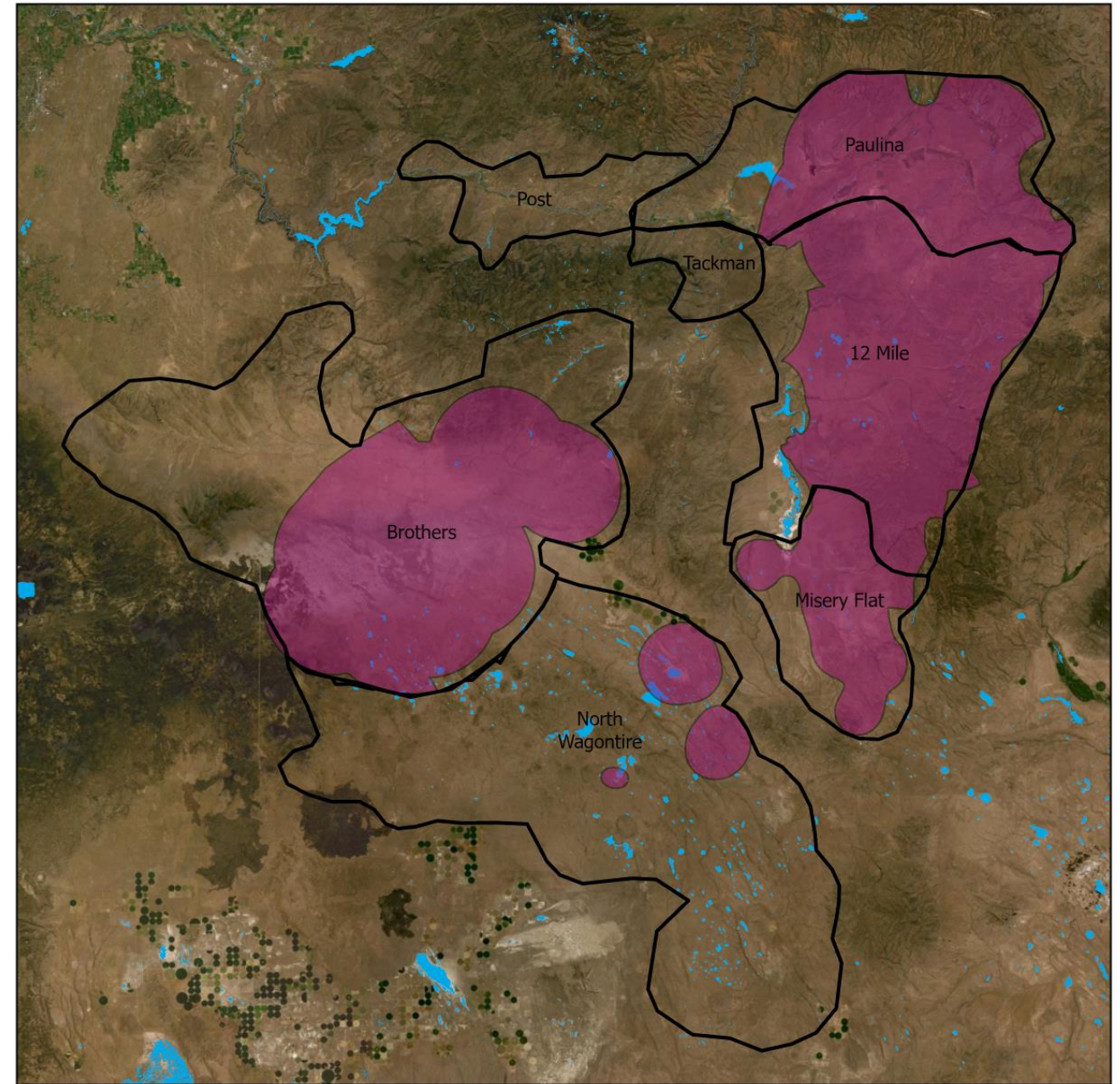
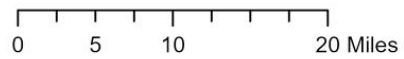


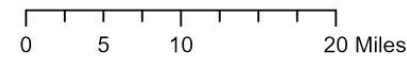
In December 2020, a sub-group of the LIT (ODFW, BLM, USFWS, USFS, NRCS, SWCDs, ECAS, DSL) meet with the purpose of modifying the 2012 Action Area boundaries based on current conditions. Additionally, for each action area, the group identified primary threats the LIT should consider when prioritizing future implementation efforts. The sub-group presented the results of their work to the entire LIT in January 2021 and the consensus group was convened to make the final determination to adopt this product. The consensus results are on the last page of this document



2012 Action Area



2020 Action Area



SageGrouse

- Priority Areas of Conservation
- Action Area Boundary

ACTION AREA	THREATS	NOTES
12-Mile	<ul style="list-style-type: none"> ▪ Juniper encroachment ▪ Invasive annual grasses ▪ Understory depletion ▪ Wet meadow habitat - limited 	<ul style="list-style-type: none"> ▪ BLM: encroaching juniper cut, re-treat ~10-15 years; invasive annual grasses (IAG) limited to disturbed areas/roadways ▪ NRCS: ~75% encroaching juniper cut on private land, limited funding until new Farm Bill passed; looking to do wet meadow work starting 2021 ▪ SWCD/NRCS: private lands have minimal IAGs
Brothers/Camp Creek	<ul style="list-style-type: none"> ▪ Juniper encroachment ▪ Invasive annual grasses ▪ Understory depletion ▪ Wet meadow habitat - limited ▪ Habitat fragmentation ▪ Development ▪ Recreation ▪ Loss of forbs 	<ul style="list-style-type: none"> ▪ BLM: recreation likely tied to general use rather than special use permits; currently analyzing new permit for troubled youth program, which does seem to have an impact; traffic counters saw a spike in activity once pandemic started; South Millican OHV area closed from November-August but high OHV use outside of the area ▪ FS: increased mountain bike use ▪ Pine Mountain and Kotzman Basin important areas for sage-grouse ▪ Wet meadow habitat limited to playas, push-ups (dams outside of playas), dugouts, water sets (troughs), portable water troughs, guzzlers ▪ More IAGs north of the highway but native bunchgrasses looking good ▪ Rabbitbrush (artifact of fire) concentrated north of the highway and in patches south of the highway in fire scars ▪ Future plans to subdivide land in the area and develop
Misery Flat	<ul style="list-style-type: none"> ▪ Juniper encroachment ▪ Invasive annual grasses ▪ Understory depletion ▪ Crested wheatgrass seedlings 	<ul style="list-style-type: none"> ▪ DSL: some juniper treatments occurring although not all fall within the action area boundary ▪ BLM: area northwest of Misery Flat may have some grouse telemetry from the 90s for the pending leks in this area (near Sand Springs WSA); sparse habitat for sage-grouse in this area, more like a juniper woodland
North Wagontire	<ul style="list-style-type: none"> ▪ Juniper encroachment ▪ Understory depletion ▪ Wet meadow habitat – limited 	<ul style="list-style-type: none"> ▪ Artificial sources of water (e.g., dugouts/pushups) and playas are the only sources of wet meadow habitat; water from playas highly variable and based on winters/spring precipitation ▪ Some years grass cover is minimal; some areas of crested wheatgrass seedlings
Paulina	<ul style="list-style-type: none"> ▪ Juniper encroachment ▪ Invasive annual grasses ▪ Recreation (OHV use) 	<ul style="list-style-type: none"> ▪ BLM/FS: some conifer encroachment near Powell Mountain and Bronco Creek, both agencies doing work in those areas; some stringers run out into the sage steppe ▪ FS: removing trees in the low sage sites; doing habitat mapping to see what might be productive sage-grouse habitat – halted due to lack of funding ▪ Sage species primarily <i>A. rigada</i> on public and <i>A. vaseyana</i> on private ▪ Wet meadows in good condition but may be opportunities for habitat work/improvement
Post	<ul style="list-style-type: none"> ▪ Juniper encroachment ▪ Invasive annual grasses ▪ Loss of forbs 	<ul style="list-style-type: none"> ▪ Mosaic of healthy rangeland but areas of juniper encroachment and IAGS with no sagebrush ▪ NRCS: lek in an area of low sage where treatments occurred ▪ South side of river (Crooked) fairly intact but north side has substantial IAG issues once you get to ~4000 feet in elevation the habitat starts to improve
Tackman	<ul style="list-style-type: none"> ▪ Juniper encroachment ▪ Invasive annual grasses ▪ Noxious weeds 	<ul style="list-style-type: none"> ▪ Good potential for wet meadow habitat work ▪ Consider expanding area to the east

Consensus (Working Group) Members - only one person from each member group may cast a "vote" (i.e., primary or alternate)

- 1 – BLM (primary: Larry Ashton, alternate: Amanda Roberts)
- 1 – USFS (primary: Lauri Turner, alternate: Monty Gregg)
- 1 – Brothers landowners (primary: Jade Cooper, alternate: ?)
- 1 – Paulina landowner (primary: Greg Bedortha, alternate: ?)
- 1 – DSL (primary: Randy Weist, alternate: Mike Schmeiske)
- 1 – ODFW (primary: Greg Jackle, alternate: Corey Heath)
- 1 – USFWS (primary: Emily Weidner)
- 1 – Conservation groups (primary: ECAS – Stu Garrett, alternate: TRCP – Michael O’Casey)
- 1 – Crook County (primary: Tim Deboodt)
- 1 – Deschutes County (?)
- 1 – NRCS (primary: Chris Mundy, alternate: ?)
- 1 – SWCD (primary: Andy Gallagher, alternate: Rachael Davee)

Prompt: adopt the 2021 Action Areas as management units for the Prineville LIT

	1 - I like it	2 - Basically, I like it	3 - I can live with it	*4 - I want my disagreement noted in writing, but I'll support it	*5 - I won't support it
BLM (Larry or Amanda)		X			
USFS (Laurie or Monty)	X				
Brothers Landowner (Jade)					
Paulina Landowner (Greg)					
DSL (Randy or Michael)			X		
ODFW (Greg or Corey)	X				
USFWS (Emily)	X				
Conservation Group (Stu or Michael)			X		
Crook County (Tim)					
Deschutes County (open)					
NRCS (Chris or Shelby)	X				
SWCD (Andy or Rachael)	X				

* if you ranked this a 4 or 5, please include a comment with rationale in the Zoom Chat

Prompt: The threats and issues identified within the 2021 Action Areas will prioritize future efforts within the Prineville Strategic Action Plan

	1 - I like it	2 - Basically, I like it	3 - I can live with it	*4 - I want my disagreement noted in writing, but I'll support it	*5 - I won't support it
BLM (Larry or Amanda)	X				
USFS (Laurie or Monty)	X				
Brothers Landowner (Jade)					
Paulina Landowner (Greg)					
DSL (Randy or Michael)			X		
ODFW (Greg or Corey)	X				
USFWS (Emily)	X				
Conservation Group (Stu or Michael)	X				
Crook County (Tim)					
Deschutes County (open)					
NRCS (Chris or Shelby)	X				
SWCD (Andy or Rachael)	X				

* if you ranked this a 4 or 5, please include a comment with rationale in the Zoom Chat